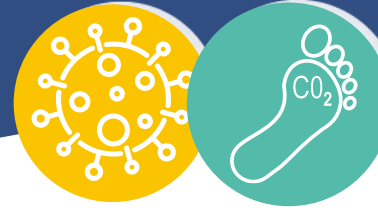




Focus on our Business/Site Emissions



Iechyd Cyhoeddus
Cymru
Public Health
Wales

Business/ Site emissions includes energy and fuel consumption across PHW's offices, laboratories, and clinics, PHW owned fleet vehicles and waste.

PHW sites mainly include PHW's offices, laboratories, and clinics, operating out of existing NHS hospitals and clinics.

Key messages*

Business/Site emissions accounted for

15%
of PHW's total emissions
2019/20

23%
of PHW's total emissions
2020/21



Overall there was reduction of



-29%
PHW's Business/
Site Operations
emissions
between 2019/20
and 2020/21



The most significant Business/ Site Emission reductions were

PHW's gas oil
consumption
-62%

and the operation of
PHW's vehicle fleet

-67%

Gas consumption



+9.9%
in 2020/21
compared to
2019/20

Potentially due to increased heating requirements in our buildings which remained open or were used as temporary testing/ vaccination clinics.

Grid electricity



only marginally
decreased by
-1.4%
in 2020/21

Potentially due to increased consumption at sites which remained open during the pandemic.

PHW fleet travel

reduced from



This reflects the reduction in non-essential clinics/ support services provided as a result of the pandemic.

*Data has been provided excluding procurement emissions to highlight the sources which PHW has the most control/ opportunity to reduce emissions

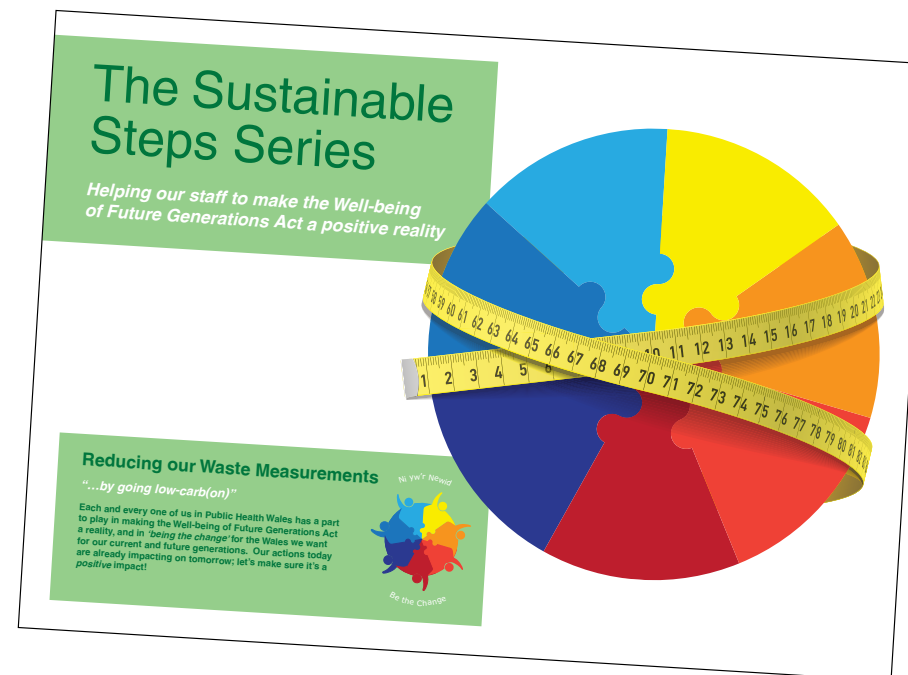


Recommendations for PHW

As part of the Well-being of Future Generations Act, reducing emissions from buildings and site operations help transition to a low carbon society and ensures we use natural resources efficiently, to achieve a prosperous and resilient Wales.

- Reduce Business/ Site emissions to achieve Net Zero 2030 target.
- Revise existing building management systems (heating/ cooling/ lighting schedules) to reduce the amount of unnecessary energy consumption associated with offices, clinics and laboratories on reduced occupancy.
- Improve the understanding of how energy is used within buildings and sites to improve energy management and increase energy efficiency across the portfolio.
- Increase the proportion of energy sourced from green/ renewable tariffs.
- Work closely with waste contractors and building landlords (where offices are co-located in shared sites) to improve the amount of waste collection data which is recorded.

How can you help?



- Use the correct bins to recycle items when at a PHW site and think about the waste items you are generating and how they could be reduced or removed.

For more information see the Hub's [Be the Change – Reducing our Waste Measurements e-guide](#).
- Report issues with heating / cooling in buildings.