



**GIG**  
CYMRU  
**NHS**  
WALES

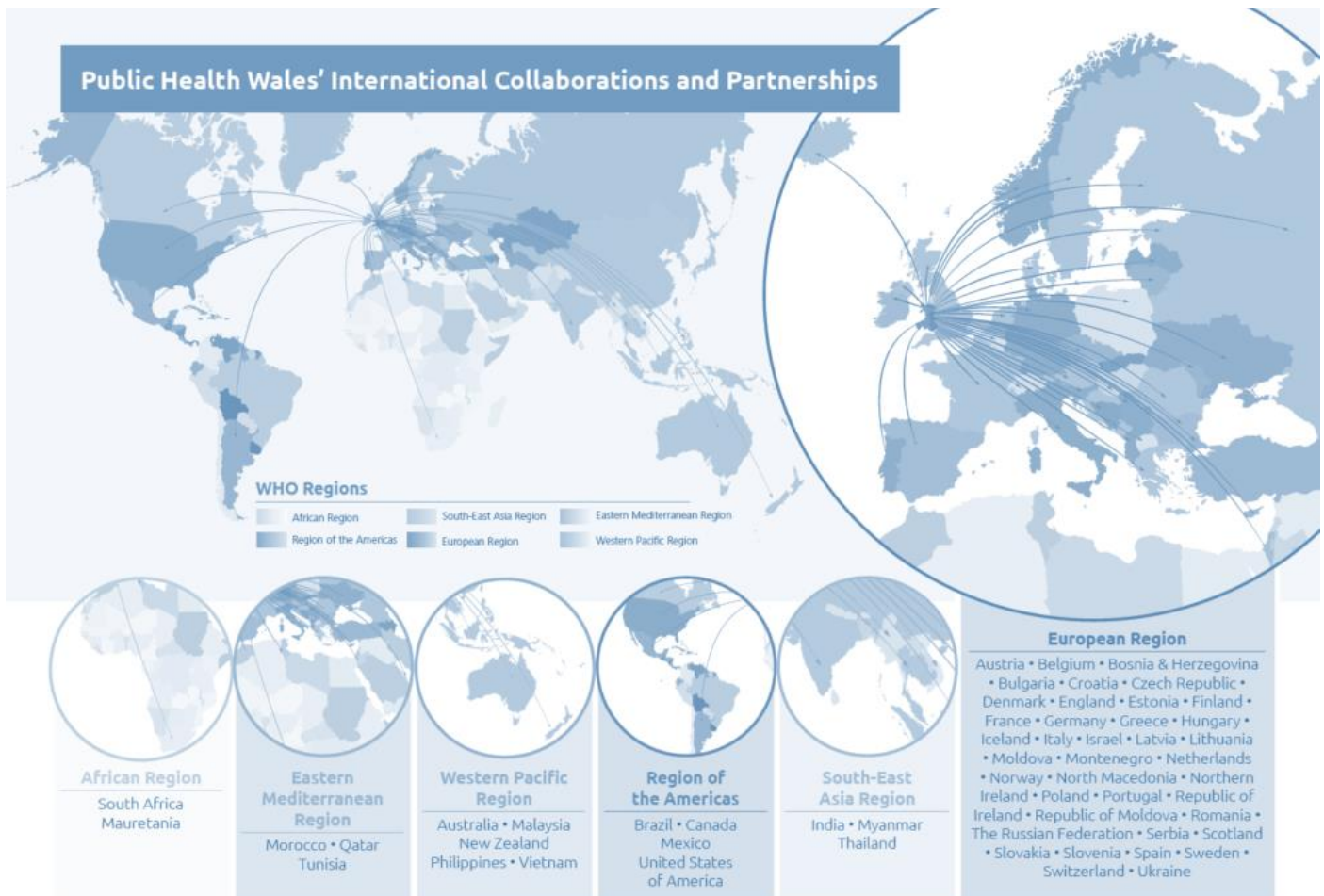
Iechyd Cyhoeddus  
Cymru  
Public Health  
Wales

## Technical Supporting Information

### Annex II:

## Mapping Public Health Wales' International Reach

October 2023



## Mapping of Public Health Wales' International Reach

---

Mapping of Public Health Wales' international activity has been carried out (Figure 1) through a wide consultation and engagement process. This included an online consultation through a web-based structured survey, a short 2-question "Pulse" survey, and a series of semi-structured interviews with key Public Health Wales staff members. Interviewees were regarding their participation in international and global health networks, partnerships, projects, and relevant case studies of recent and key activities. All directorates and divisions have been contacted and contributed to the mapping. For further details of the methodology, please refer to the Technical Supporting Information 1 – Developing the Public Health Wales International Health Strategy.

The information gathered may not be fully representative of all international and global health engagement Public Health Wales staff are involved in, and rather provides a snapshot of more recent and active networks, projects and initiatives. Additional projects can be submitted to [international.health@wales.nhs.uk](mailto:international.health@wales.nhs.uk).

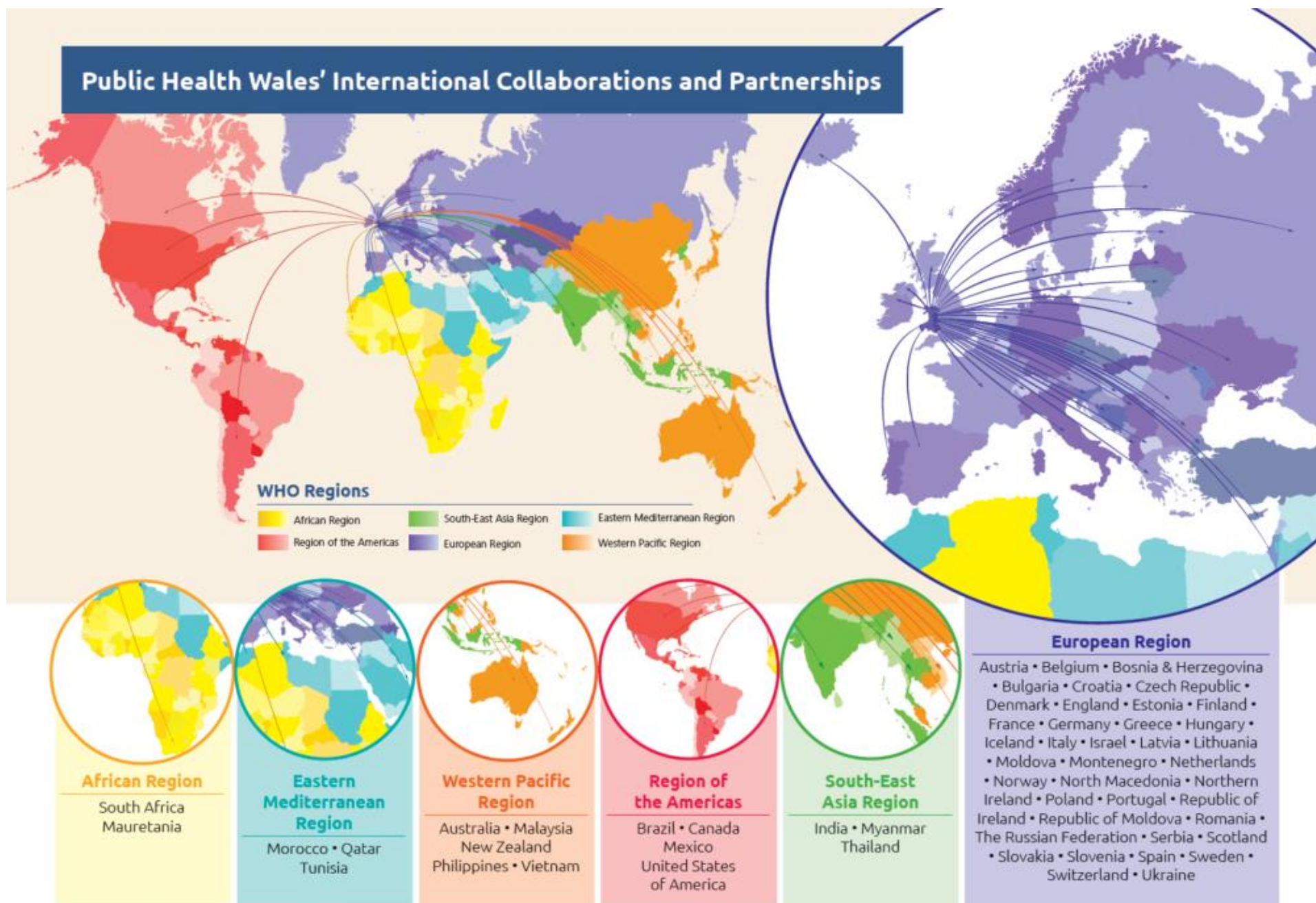
Note that the policy background is described in the Public Health Wales International Health Strategy, within the Context chapter.

The mapping responses have been categorised by directorate, country where the work is taking place and name of the project.

The WHO Regions have been used to categorise countries into regional groupings. More information on the WHO Regional Offices can be found on the [WHO website](#). The WHO Regions are:

1. Region of the Americas	4. African Region
2. Eastern Mediterranean Region	5. European Region
3. Western Pacific Region	6. South-East Asia Region

Figure 1. Mapping of International Collaborations and Partnerships in Public Health Wales



## Health and Well-being

Project Name	Keywords	External Partnership	Project Link	WHO Region	Country
Vulnerability profiling	Children & young people, Child development	Swansea University Welsh Government European Social Fund - Knowledge Economy Skills Scholarship (KESS 2)	Not yet published	Europe	UK
IANPHI partnership	Children & young people, Maternal health	IANPHI	<a href="#">Home   IANPHI</a>	Global	-
EuroHealthNet partnership	Children & young people, Child development	EuroHealthNet	<a href="#">EuroHealthNet - European Partnership for Health Equity and Wellbeing</a>	Europe	-
Social Prescribing	Social prescribing, shared learning	EuroHealthNet		Europe	Portugal
Four Nations CMOs partnership	Health improvement	UK Government Scottish Government Welsh Government Northern Ireland Executive	<a href="#">Welcome to GOV.UK (www.gov.uk)</a> <a href="#">The Scottish Government - gov.scot (www.gov.scot)</a> <a href="#">Home   GOV.WALES</a> <a href="#">Home   Northern Ireland Executive</a>	Europe	UK
Dental Epidemiology	Dental public health, Epidemiology, Primary care	British Association for the Study of Community Dentistry (BASCD)	-	Europe	UK
SENIOR Trial	Oral health research, Dental public health	Queens University University College London Bangor University University of Sheffield Cardiff University University of Manchester Aneurin Bevan University Health Board Health and Social Care Board Belfast South Eastern Health and Social Care Trust Health Education and Improvement Wales Care Forum Wales Patient and Public Involvement	-	Europe	UK
Oral Health Strategy	Dental public health, Strategy, Shared Learning	World Health Organization	<a href="#">Landmark global strategy on oral health adopted at World Health Assembly 75 (who.int)</a>	Global	-
Greener Primary Care Inhaler Work	Inhaler use and disposal, Primary care	Scottish Government UK Government	-	Europe	UK

Five Nations Public Mental Health Network	Health improvement, Mental Health, Shared Learning, Policy Development	Public Health Scotland Institute of Public Health Ireland Public Health Agency (NI) Office for Health Improvement and Disparities (OHID)	-	Europe	UK Northern Ireland
---	--	---	---	--------	------------------------

## Health Protection and Screening Services

Project Name	Keywords	External Partnership	Project Link	WHO Region	Country
Asylum seekers and refugee health in Poland	Asylum seekers & refugees, Pandemic response	IANPHI	<a href="#">IANPHI Europe Visits Poland to Learn from its Refugee Response   IANPHI</a>	Europe	Poland
Consortium of Technical Advisors Service	Health improvement, Healthy diet	Health Education England Foreign, Commonwealth & Development Office	-	South-East Asia Africa Americas	Philippines Malaysia Thailand Vietnam Myanmar South Africa Brazil Mexico
Co-ordination of support to Ukraine public health Centre	Public Health Support	IANPHI, Ukraine PHC		Europe	Ukraine
Jersey investing in a new health protection system	Health protection, Case management		-	Europe	Jersey
	Epidemiology, collaboration	ECDC	-	Americas Europe South-East Asia	United states of America Europe India
Strengthened International Health Regulations and Preparedness Joint Action in the EU (SHARP JA)	Health Regulations, Cross border health threats	European Commission	<a href="http://sharpia.eu">SHARP Joint Action (sharpia.eu)</a>	Europe	Norway UK Serbia Moldova Bosnia & Herzegovina Iceland Belgium Switzerland Bulgaria Finland Sweden Estonia Latvia Lithuania Denmark Ireland Netherlands Germany Poland

					Czechia Slovakia Hungary Austria Slovenia Croatia Greece Italy France Spain Portugal
Health Protection Surveillance Systems	Epidemiology, Disease Surveillance	Qatar Ministry of Health	-	Eastern Mediterranean Region	Qatar
Drug and Substance Misuse Network	Drug & substance misuse	European Network	-	Pan Europe	
Climate Change and Adaption	Climate change		-		
Vaccine Preventable Disease Program	Vaccination, Inequalities	WHO Europe	-	Europe	
Antimicrobial Resistance	Antimicrobial Resistance, Surveillance, Monitoring		-		
Partnership with Asia Europe Foundation (ASEF)	Global Challenges, Collaboration, Networks	ASEM governments	-	South-East Asia	
Environmental Public Health Desk	Environmental public health, Climate change	UKHSA	-	Europe	UK
Sex Inequalities and Environmental Issues	Climate change, Gender inequalities	UK Government	-	Europe	UK
20MPH Speed Limit	Road Safety	University of the West of England Edinburgh University	-	Europe	UK
Health effects of Environmental Incidence Surveillance	Climate change, Surveillance	Centre for Disease Control (CDC)	-	Americas	USA
Environmental Help Desk	Environmental public health, health and protection	UKHSA	-	Europe	England
Sex Inequalities and Environmental Issues	Environmental public health, gender inequalities	UK Government	-	Europe	UK
20 MPH Speed Limit	Environmental public health, road safety, advisory	University of the West of England University of Edinburgh	-	Europe	England Scotland
Graduated Driver Licensing	Environmental public health, road safety	Transport Research Laboratory Crowthorne, Berkshire University of Sydney University of Otago	-	Europe	UK Australia New Zealand
CDC Surveillance	Environmental health, surveillance	Centers for Disease Control and Prevention	-	Americas	USA

## Data, Knowledge and Research

Project Name	Keywords	External Partnership	Project Link	WHO Region	Country
COVID Discourse	COVID-19, Communication, Political Discourse	Nottingham University Cardiff University	-	Europe	UK
SIREN	Surveillance, COVID-19, Vulnerable Groups	UKHSA Health & Care Research Wales Glasgow Caledonian University Health and Social Care Northern Ireland	-	Europe	UK
Health Foundation National Data Lab	Data Comparison, COVID-19	The Health Foundation	-	Europe	UK
Cancer Research Strategy for Wales	Cancer, Population Health	Swansea University Queens University Belfast Oxford University	-	Europe	UK
Simplify	Cancer, Data	Oxford University America - Grail	-	Europe Americas	UK USA
MRC Node Bid - Congenital Anomaly Register and Information Service (CARIS)	Child Abnormalities, Child development, Children & young people	National Congenital Anomaly & Rare Disease Registration System ( NCARDRS) Congenital Anomaly & Rare Disease Information Service Scotland ( CARDRISS) Public Health Scotland Queens University	-	Europe	UK
CARIS - European network of population-based registries for the epidemiological surveillance of congenital anomalies	Epidemiology, Surveillance, Congenital anomalies	European network of population-based registries for the epidemiological surveillance of congenital anomalies (EUROCAT)	<a href="#">EUROCAT   EU RD Platform (europa.eu)</a>	Europe	-
CARIS - EUROmedicAT	Pregnancy, Child Development, Congenital anomalies	EUROmedicAT European network of population-based registries for the epidemiological surveillance of congenital anomalies (EUROCAT) Ulster University	<a href="#">EUROmedicAT</a>	Europe	Ireland
CARIS - International Clearing House of Birth Defects	Child Development, Congenital anomalies	International Clearing House of Birth Defects (ICBDSR)	<a href="#">ICBDSR</a>	Global	-
CARIS - EUROLinkCAT	Child Development, Congenital anomalies	EUROLinkCAT	<a href="#">EUROLinkCAT - Establishing a linked European Cohort of Children with Congenital Anomalies</a>	Europe	-
COVID-19 Vaccination	COVID-19, Vaccination	Oxford University Industry partners – AstraZeneca/ Novavax	-	Europe	UK
Equity in digital health technology and the use of digital health to support health	International health assets, strategic partnerships, learning, activities, impact	WHO Regional Office for Europe	-	Europe	Copenhagen



## World Health Organization Collaboration Centre on Investment for Health and Well-being

Project Name	Keywords	External Partnership	Project Link	WHO Region	Country
WHOCC Designation & Re-designation	Network, collaboration, partnership	World Health Organization (WHO)	<a href="#">WHO re-designates Collaborating Centre to secure Wales as global influencer on health and wellbeing - Public Health Wales (nhs.wales)</a>	Europe	Italy Slovenia Finland Belgium Norway Sweden
Welsh Government / WHO MoU	Network. Collaboration, partnership	World Health Organization (WHO)	<a href="https://www.who.int/europe/news/item/05-11-2020-new-agreement-between-who-europe-and-welsh-government-launched-to-accelerate-action-on-health-equity">https://www.who.int/europe/news/item/05-11-2020-new-agreement-between-who-europe-and-welsh-government-launched-to-accelerate-action-on-health-equity</a>  Written Statement: <a href="#">Signing of a Memorandum of Understanding with the World Health Organisation to promote health equity (11 November 2020)   GOV.WALES</a>	Europe	Italy
Deep dives on the well-being economy showcasing the experiences of Finland, Iceland, Scotland and Wales: summary of key findings	Collaboration, Economy of well-being	World Health Organization (WHO)/ WHO European Office for Investment for Health and Development (Venice, Italy)	<a href="https://www.who.int/europe/publications/i/item/WHO-EURO-2023-7033-46799-68216">https://www.who.int/europe/publications/i/item/WHO-EURO-2023-7033-46799-68216</a>	Europe	Multiple Countries
Regions for Health Network (RHN)	Network, forum, partnership	World Health Organization (WHO)	<a href="#">Regions for Health Network (RHN) (who.int)</a>	Europe	Multiple Countries
European Public Health Association (EuPHA)	Academic partnership	European Public Health Association (EuPHA)	<a href="#">The European Public Health Association (eupha.org)</a>	Europe	Multiple Countries
European Health Forum Gastein Alumni	Academic partnership, policy, clinical public health	EuroHealthNet	<a href="#">European Health Forum Gastein (ehfg.org)</a>  <a href="#">EHFG — About</a>	Europe	-
Joint Scientific Advisory Group (JSAG)	Advisory, collaboration, network	World Health Organization (WHO) Welsh Government Welsh Local Government Association (WLGA)	-	Europe	UK Italy
International Association of National Public Health Institutes (IANPHI)	Network, collaboration	International Association of National Public Health Institutes	<a href="#">Home   IANPHI</a>	Global	-

Public Health Ireland	Advisory, guidance, health impact assessment	Institute of Public Health	<a href="#">Home - Institute of Public Health</a>	Europe	Ireland
University College Cork Ireland	Academic partnership, health impact assessment	University of Cork	<a href="#">World-class Undergraduate and Postgraduate Education in Ireland (ucc.ie)</a>	Europe	Ireland
Austrian Public Health Association	Advisory, health impact assessment	Austrian Public Health Association	<a href="#">Austrian Public Health Association (eupha.org)</a>	Europe	Austria
International Association of Impact assessment (IAIA)	Network, health impact assessment	International Association of Impact assessment	<a href="#">IAIA The leading global network on impact assessment</a>	Global	-
Society of Health Impact Assessment Practitioners (SOPHIA)	Network, health impact assessment	Society of Health Impact Assessment Practitioners (SOPHIA)	<a href="#">SOPHIA - Home (hiasociety.org)</a>	Global	-
Manitoba Public Health department	Advisory, health impact assessment	Manitoba Public Health department	-	Americas	Canada
Public Health Institute of Iceland	Advisory, health impact assessment	Public Health Institute of Iceland Reykjavik City Council	-	Europe	Iceland
The Andalusian School of Public Health	Advisory, health impact assessment	The Andalusian School of Public Health	-	Europe	Spain
Faculty of Public Health	Network, collaboration, trade and health	Faculty of Public Health	<a href="#">Home (fph.org.uk)</a>	Europe	UK
Maastricht University	Academic partnership	Maastricht University	<a href="#">Maastricht University</a>	Europe	Netherlands
New South Wales Health Board	Collaboration, health impact assessment	New South Wales Health Board	<a href="#">NSW Health</a>	Western Pacific Region	Australia
Scottish Government	Collaboration, social value, social return on investment	Scottish Government	<a href="#">The Scottish Government - gov.scot (www.gov.scot)</a>	Europe	Scotland
Prevention of Non-Communicable Disease Using Trade Agreements (PETRA)	Network	PETRA	<a href="#">Home - PETRA (petranetwork.org)</a>	Europe	UK
Decomposition analysis	WHESRI	WHO Venice	<a href="https://phwwhocc.co.uk/resources/whesri-influencing-the-health-gap-in-wales/">https://phwwhocc.co.uk/resources/whesri-influencing-the-health-gap-in-wales/</a>	Europe	Italy
International Horizon Scanning	Horizon Scanning, rapid review	Not applicable	<a href="https://phwwhocc.co.uk/covid-19/international-horizon-scanning/">https://phwwhocc.co.uk/covid-19/international-horizon-scanning/</a>	-	-
Tackling Adverse Childhood Experiences (ACEs) State of the Art and Options for Action	ACEs	WHO Regional Office for Europe	<a href="#">Tackling Adverse Childhood Experiences (ACEs) State of the Art and Options for Action - World Health Organization Collaborating Centre On</a>	Europe	Denmark

			<a href="https://phwwhocc.co.uk">Investment for Health and Well-being (phwwhocc.co.uk)</a>		
A technical handbook on adverse childhood experiences (ACEs): Delivering prevention, building resilience and developing trauma-informed systems	ACEs	WHO Regional Office for Europe	Not available	Europe	Denmark
Exploring the social value of Public Health Institutes: an international scoping survey and expert interviews	Social value, Economy of well-being	Maastricht University	<a href="https://phwwhocc.co.uk/resources/exploring-the-social-value-of-public-health-institutes-an-international-scoping-survey-and-expert-interviews/">https://phwwhocc.co.uk/resources/exploring-the-social-value-of-public-health-institutes-an-international-scoping-survey-and-expert-interviews/</a>  <a href="https://www.frontiersin.org/articles/10.3389/fpubh.2022.906286/full">https://www.frontiersin.org/articles/10.3389/fpubh.2022.906286/full</a>	Europe	Netherlands
The impact of the healthcare sector on the Welsh economy	Social value, Economy of well-being	WHO Venice, University of Maribor Slovenia	<a href="https://phwwhocc.co.uk/resources/toward-an-economy-of-wellbeing-the-economic-impact-of-the-welsh-healthcare-sector/">https://phwwhocc.co.uk/resources/toward-an-economy-of-wellbeing-the-economic-impact-of-the-welsh-healthcare-sector/</a>  <a href="https://www.frontiersin.org/articles/10.3389/fpubh.2022.953752/full">https://www.frontiersin.org/articles/10.3389/fpubh.2022.953752/full</a>	Europe	Italy, Slovenia
Social Value Database and Simulator	Social value, Economy of well-being	Not applicable	<a href="https://phwwhocc.co.uk/ih/our-work/sustainable-investment-for-health-well-being/">https://phwwhocc.co.uk/ih/our-work/sustainable-investment-for-health-well-being/</a>	-	-
Life course health consequences and associated annual costs of adverse childhood experiences across Europe and North America: a meta-analysis	ACEs, Criminal justice and violence prevention	WHO Bonn	<a href="https://phwwhocc.co.uk/resources/life-course-health-consequences-and-associated-annual-costs-of-adverse-childhood-experiences-across-europe-and-north-america-a-meta-analysis/">https://phwwhocc.co.uk/resources/life-course-health-consequences-and-associated-annual-costs-of-adverse-childhood-experiences-across-europe-and-north-america-a-meta-analysis/</a>  <a href="https://www.thelancet.com/journals/lanpub/article/PIIS2468-2667(19)30145-8/fulltext#%20">https://www.thelancet.com/journals/lanpub/article/PIIS2468-2667(19)30145-8/fulltext#%20</a>	Europe Americas	Germany North America
Health and financial costs of adverse childhood experiences in 28 European	ACEs	WHO Bonn	<a href="https://phwwhocc.co.uk/resources/health-and-financial-">https://phwwhocc.co.uk/resources/health-and-financial-</a>	Europe	UK Germany

countries: a systematic review and meta-analysis			<a href="#">costs-of-adverse-childhood-experiences-in-28-european-countries-a-systematic-review-and-meta-analysis/</a>  Health and financial costs of adverse childhood experiences in 28 European countries: a systematic review and meta-analysis - The Lancet Public Health		
School-based violence prevention: a practical handbook	Violence Prevention	WHO Geneva UNESCO UNICEF	<a href="https://apps.who.int/iris/handle/10665/324930">https://apps.who.int/iris/handle/10665/324930</a>	Global	Switzerland
Adverse childhood experiences, childhood relationships and associated substance use and mental health in young Europeans	ACEs	WHO Copenhagen	<a href="https://academic.oup.com/eurpub/article/29/4/741/5416187?login=true">https://academic.oup.com/eurpub/article/29/4/741/5416187?login=true</a>	Europe	Czech Republic, Denmark, Lithuania, Republic of Moldova, Montenegro, Poland, Romania, the Russian Federation, Serbia, Ukraine and the former Yugoslav Republic of Macedonia
Welsh Health Equity Solutions Platform	WHESRI	WHO Venice	<a href="https://phwwhocc.co.uk/ih/our-work/welsh-health-equity-status-report-initiative-whesri/">https://phwwhocc.co.uk/ih/our-work/welsh-health-equity-status-report-initiative-whesri/</a>	Europe	Italy
Global citizenship E-Learning modules	IHCC, global citizenship, online learning	Welsh Centre for International Affairs Oxfam Cymru	<a href="https://learning.nhs.wales/?search=global+citizenship">https://learning.nhs.wales/?search=global+citizenship</a>	Europe	Wales
Health Impact Assessment COVID-19 comparison paper	Health Impact Assessment, WHIASU	Scotland, Australia	Not available	Europe	Scotland
Comparing predicted and observed health impacts of COVID-19 lockdowns: Two Health Impact Assessments in Scotland and Wales	Health Impact Assessment, WHIASU	Scotland	<a href="https://phwwhocc.co.uk/resources/predicted-and-observed-impacts-of-covid-19-lockdowns-two-health-impact-assessments-in-scotland-and-wales/">https://phwwhocc.co.uk/resources/predicted-and-observed-impacts-of-covid-19-lockdowns-two-health-impact-assessments-in-scotland-and-wales/</a>	Europe	Scotland
Public Health Spatial Planning book	Spatial planning, urban planning	Health Security Agency England Office of Health Improvement and Disparity WHO Collaborating Centre for Healthy Urban Environments	<a href="https://policy.bristoluniversitypress.co.uk/public-health-spatial-planning-in-practice">https://policy.bristoluniversitypress.co.uk/public-health-spatial-planning-in-practice</a>	Europe	England

What can Public Health Institutes learn from the practice of Health Impact Assessment (HIA) in Wales to mobilise Health in all Policies (HiAP) in the WHO European Region?	Health Impact Assessment, WHIASU	Maastricht University	<a href="https://phwwhocc.co.uk/resources/facilitators-barriers-and-views-on-the-role-of-public-health-institutes-in-promoting-and-using-health-impact-assessment-an-international-virtual-scoping-survey-and-expert-interviews/">https://phwwhocc.co.uk/resources/facilitators-barriers-and-views-on-the-role-of-public-health-institutes-in-promoting-and-using-health-impact-assessment-an-international-virtual-scoping-survey-and-expert-interviews/</a>	Europe	Netherlands
The Public Health Implications of Brexit in Wales: A Health Impact Assessment Approach. A rapid review and update	Health Impact Assessment, WHIASU	Welsh Government Cardiff University the Society of Practitioners of Health Impact Assessment (SOPHIA) Edinburgh University Food Standards Agency	<a href="https://phwwhocc.co.uk/resources/the-public-health-implications-of-brex-it-in-wales-a-health-impact-assessment-approach/">https://phwwhocc.co.uk/resources/the-public-health-implications-of-brex-it-in-wales-a-health-impact-assessment-approach/</a>	Europe	UK
Trade and Health Work-Stream	Trade and Health, economics, policy	The University of Trondheim, Norway	Not available	Europe	Norway
Climate Change Health Impact Assessment	Health Impact Assessment	Multi Agency Strategic Advisory Group	Not available	Europe	UK
Cost of Health Inequality to the NHS in Wales. Report 1: Cost Associated with Inequality in Hospital Service Utilisation	Health economics	University of York	<a href="https://phwwhocc.co.uk/resources/cost-of-health-inequality-to-the-nhs-in-wales-report-1-cost-associated-with-inequality-in-hospital-service-utilisation/">https://phwwhocc.co.uk/resources/cost-of-health-inequality-to-the-nhs-in-wales-report-1-cost-associated-with-inequality-in-hospital-service-utilisation/</a>	Europe	UK
Cost of Health Inequality to the NHS in Wales: Report 2: Primary Care	Health economics	University of York	Not available	Europe	UK
Cost of Health Inequality to the NHS in Wales: Report 3: Wider social and community care	Health economics	University of York	Not available	Europe	UK
Cost of Health Inequality to the NHS in Wales dashboard	Health Economics	University of York	<a href="https://improvementcymru.shinyapps.io/chew_dashboard/">https://improvementcymru.shinyapps.io/chew_dashboard/</a>	Europe	UK
A guide for setting up Behavioural and cultural insights (BCI) units for improved health outcomes: considerations for national health authorities	Behavioural science	WHO Europe, BCI Team, Copenhagen	<a href="https://apps.who.int/iris/handle/10665/352505">https://apps.who.int/iris/handle/10665/352505</a>	Europe	Multiple Countries
A resolution and action framework for the implementation of BCI for better health as a flagship initiative under the 2020/25 Euro Programme	Behavioural science	WHO Europe, BCI Team, Copenhagen	<a href="https://www.who.int/europe/initiatives/healthier-behaviours-incorporating-behavioural-and-cultural-insights">https://www.who.int/europe/initiatives/healthier-behaviours-incorporating-behavioural-and-cultural-insights</a>	Europe	Multiple Countries

Developing the role of WHO Collaborating Centres in behavioural and cultural insights for better health	Behavioural science	WHO Europe, BCI Team, Copenhagen	-	Europe	Multiple Countries
Devolved administration Trade and Health Meeting	Trade	UKHSA Public Health Scotland Public Health Agency Northern Ireland	Not applicable	Europe	UK
Place-Based Health Conference	Healthy spaces, public health & planning, conference	Office for Health Improvement and Disparities (OHID) UKHSA Public Health Scotland Public Health Agency Northern Ireland	Not applicable	Europe	UK

### Quality, Nursing and Allied Health Professionals

Project Name	Keywords	External Partnership	Project Link	WHO Region	Country
Nursing Now	Nursing, Shared Learning, universal health coverage, gender inequalities	International Council of Nursing Wales & Africa Local health boards NHS trusts Social Care Wales World Organization of Family Doctors (WONCA)	<a href="#">Nursing Now - Public Health Wales (nhs.wales)</a>	Global Europe	UK
THET Steering Group	Health Professionals, workforce, network, shared learning	Tropical Health and Education Trust (THET)	<a href="#">Experts in Our Midst   Recognising the contribution NHS diaspora make to global health - THET</a>	Africa South-East Asia	-
EU Small Countries	Nursing, infrastructure, shared learning	-	-	-	-
International Council of Nursing Conference	Nursing, infrastructure, shared learning, conference	International Council of Nursing	-	Global	-
British Indian Nurses Association Conference	Nursing, shared learning, conference	British Indian Nurses Association	-	South-East Asia	India
Enhancing Safeguarding in North Africa	Safeguarding, Rights of the Child, shared learning, research on baseline service quality, datasets, classifications	Swansea University Moroccan Children's Trust North African Safeguarding leads Tunisia Morocco Mauretania Delegation	-	Eastern- Meditation	Morocco Tunisia Mauretania
European Adelphi Study	Child abuse, neglect, shared learning, Consensus Definitions, Child maltreatment, Safeguarding data, surveillance and recording	Cardiff University European Union Cooperation on Science and Technology COST Action 19106 Euro-CAN UNICEF	<a href="https://liu.se/en/research/barnafriid/euro-can">https://liu.se/en/research/barnafriid/euro-can</a>	Europe Eastern Mediterranean region	UK Sweden Finland Portugal Greece

					Germany Spain Poland Italy Israel Bulgaria
<b>Operations and Finance</b>					
<b>Project Name</b>	<b>Keywords</b>	<b>External Partnership</b>	<b>Project Link</b>	<b>WHO Region</b>	<b>Country</b>
No International Health Activity Reported					

## People and Organisational Development

Project Name	Keywords	External Partnership	Project Link	WHO Region	Country
People & UK Public Health Group	Workforce development, professional development, advanced public health practice	NHS England Office for Health Improvement & Disparities UK Health Security Agency Faculty of Public Health Health Education England Royal Collage of Nursing Royal Society of Public Health Public Health Scotland Association of Directors of Public Health Chartered Institute of Environmental Health Greater Manchester Fire and Rescue Service UK Public Health Register Local Government Association	-	Europe	UK
Public Health Advanced Practice Working Group	Workforce development, challenges, working group, partnerships	Health Education England UK Public Health Register Faculty of Public Health Office for Health Improvement & Disparities, Department of Health and Social Care Public Health Scotland	-	Europe	UK
UKPHR Scheme Coordinators Group	Workforce development, development scheme, assessment, partnerships	East of England registration scheme Kent, Surrey & Sussex registration scheme London registration scheme Midlands registration scheme North East registration scheme North West registration scheme Northern Ireland registration scheme Scottish boards registration scheme South West registration scheme Thames Valley registration scheme Wessex registration scheme Yorkshire & Humber registration scheme		Europe	UK
Improvement Cymru					
Project Name	Keywords	External Partnership	Project Link	WHO Region	Country
The Health Foundation Board of Q	Network, governance, oversight	The Health Foundation	-	Europe	UK



The Health Foundation 5 Nations Network	Network, collaboration, shared learning, patient safety	The Health Foundation	-	Europe	England Scotland Northern Ireland Republic of Ireland
Health Improvement Alliance Europe	Network, shared learning, collaboration	Institute for Healthcare Improvement	-	Americas	USA
Institute for Healthcare Improvement Partnership	Partnership, patient safety, diagnostics	Institute of Healthcare Improvement	-	Americas	USA
Faculty for Institute of Healthcare Improvement	Faculty, patient safety	Institute of Healthcare Improvement	-	Americas	USA
Real Time Demand Capacity Advisors	Partnership, patient safety	Real Time Demand Capacity Advisors	-	Americas	USA
Safer Care Victoria	Network, shared learning, maternal health	Safer Care Victoria	-	Western Pacific Region	Australia
Health Foundation Q Lab	Partnership, methodology design	The Health Foundation	-	Europe	England