

# WHO Collaborating Centre on Investment for Health and Well-being Re-designation

---

Public Health Wales

Virtual event, 21<sup>st</sup> April 2022

Professor Mark A Bellis, OBE, WHO CC Director

Dr Mariana Dyakova, WHO CC Deputy Director



GIG  
CYMRU  
NHS  
WALES

Iechyd Cyhoeddus  
Cymru  
Public Health  
Wales

Canolfan Gydwethredol Sefydliad  
Iechyd y Byd ar Fuddsoddi  
ar gyfer Iechyd a Llesian



World Health Organization  
Collaborating Centre on Investment  
for Health and Well-being

# World Health Organization Collaborating Centre (WHO CC) on Investment for Health and Well-being at Public Health Wales

## Overview

- The first and only one in its area of work globally, designated in March 2018, **re-designated 2022 - 2026**
- Network of more than 800 WHO collaborating centres worldwide across >80 countries
- Informs and supports the development of policies, action and solutions to achieve healthy prosperous lives for current and future generations
- Working collaboratively across the UK globally, bringing in and sharing learning, innovation, expertise and good practice, incl. the NHS, National and Local Government, academia, public and third sector



**Established and strengthening the organisational and Wales' role as a global influencer and live innovation site for health equity and prosperity for all**

## **WHO CC key achievements 2018 – 2022**

---

- Enabled and delivering an **MOU between the Welsh Government and the WHO Regional Office for Europe** enhancing Wales' visibility and impact on the global stage
- Established the first national **Welsh Health Equity Status Report initiative (WHESRI)** applying an innovative WHO framework and methodology to help reduce the health equity gap in Wales
- Progressed a portfolio of work to **strengthen the case for sustainable investment in population health and reducing inequalities**, developing innovative tools, guidance and networks
- Progressed a portfolio of work to address **adversity and trauma across the life course with a focus on ACEs, violence prevention and building resilience**
- Progressed a portfolio of work on **Sustainable Development and Health in All Policies**, informing policy and practice in Wales and internationally
- Informing and supporting the **COVID-19 response and recovery** in Wales and internationally

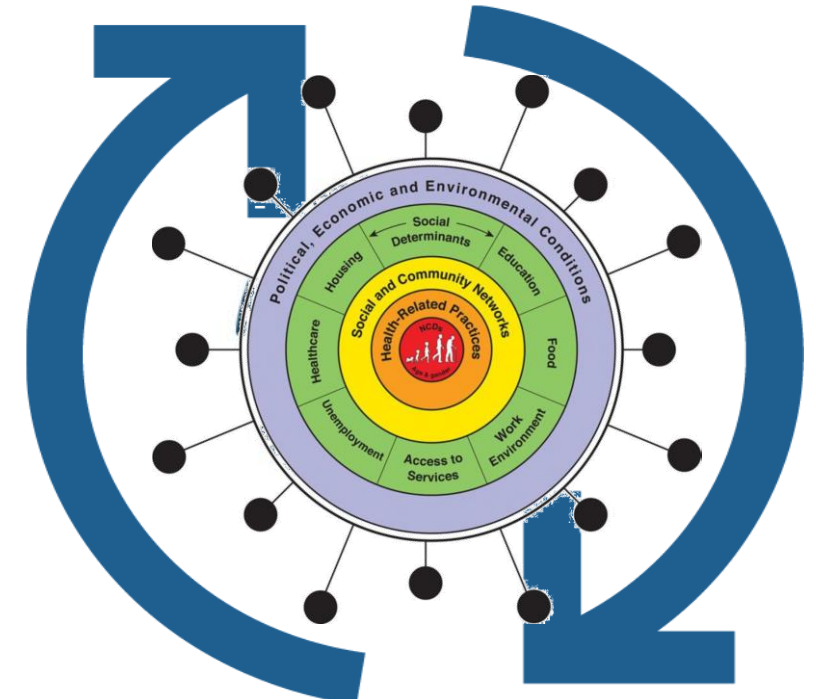
# Synergy on Global, European and National Levels Addressing the COVID-19 Syndemic

## WHO CC activities informing and supporting Wales' and international response



- 1) Inform and accelerate progress towards healthy prosperous lives for all, **mitigating harms and enabling opportunities** from COVID-19
- 2) Mobilise and synthesize evidence, enabling a **shift towards investing in population health (prevention) and health equity**
- 3) Strengthen Wales' role in Global Health Security, developing and **sharing good practice, expertise, innovative solutions and tools**

- COVID-19 International Horizon Scanning
- COVID-19 National Public Engagement Survey
- COVID-19 Health Impact Assessments (HIAs)
- COVID-19 Economic Impact & Modelling
- COVID-19 impact on violence and crime and ACEs
- WHESRI and COVID-19 first report
- WHESRI Solutions Platform, incl. COVID-19



# Wales – an Influencer and a Live Innovation Site for Health Equity in Europe and Globally

MoU between the Welsh Government and the WHO Regional Office for Europe 2020-23



COVID-19 sustainable response and recovery towards an economy of wellbeing, leaving no one behind



*Building a Healthier Wales*



**Global & European levers for change**

**United Nations 2030 Agenda for Sustainable Development**

**WHO European Programme of Work 'United Action for Better Health in Europe' 2020-2025**

**WHO Health Equity Status Report initiative (HESRI)**

**Welsh Health Equity Status Report initiative (WHESRI) and Health Equity Solutions Platform**

- Synthesise and share national and international evidence, intelligence and good practice
- Data, Policy, Economics analyses and modelling
- Identify sustainable solutions
- Develop innovative methods & tools
- Enable stakeholder engagement and partnership

**Wellbeing of Future Generations (Wales) Act**

**New Programme for Government**

**A Healthier Wales: long term plan for health and social care**

**A More Equal Wales: the Socio-economic Duty**

**Wales' enabling policies & commitment**

# WHESRI innovating and engaging to help reduce the health equity gap in Wales and beyond



## Reports series

First WHESRI report

**'Placing health equity at the heart of sustainable Covid-19 response and recovery'**

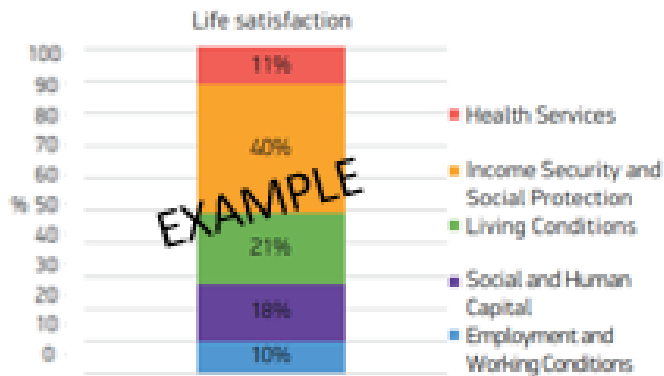


International Horizon Scanning

**Summary Report On the impact of COVID-19 on increasing the Health Gap and Vulnerability**



## Decomposition Analysis



EXAMPLE

Quantify the relative contribution of each essential condition to the health gap in Wales

## Animations



# Strengthening the case for investing in population health and equity

## Modelling economic consequences of the COVID-19 pandemic

**How to Make the Case for Sustainable Investment in Well-being and Health Equity: A Practical Guide**

Logos for GIG CYMRU NHS WALES, Iechyd Cyhoeddus Cymru Public Health Wales, and WHO Collaborating Centre on Investment for Health and Well-being.

A horizontal sequence of five circular icons: a lightbulb, a document with a magnifying glass, a megaphone, a bar chart, and a play button labeled 'START'.

**Economic Consequences of COVID-19 Pandemic Outbreak on Health Indicators and Health Service Use in Wales**

**Longstanding Illness Projection 2020/21 – 2022/23**  
September 2020

WHO Collaborating Centre on Investment for Health and Well-being at Public Health Wales  
Rajendra Kadel, James Allen, Mariana Dyakova, Mark A Bellis

Logos for GIG CYMRU NHS WALES, Iechyd Cyhoeddus Cymru Public Health Wales, and WHO Collaborating Centre on Investment for Health and Well-being.

frontiers in Public Health

ORIGINAL RESEARCH  
published: 27 February 2020  
doi: 10.3389/fpubh.2020.00049

**Health Impact and Social Value of Interventions, Services, and Policies: A Methodological Discussion of Health Impact Assessment and Social Return on Investment Methodologies**

Kathryn Ashton<sup>1\*</sup>, Lee Parry-Williams<sup>1</sup>, Mariana Dyakova<sup>1</sup> and Liz Green<sup>1,2</sup>

<sup>1</sup> Policy and International Health, WHO Collaborating Centre on Investment for Health and Well-being and the Wales Health Impact Support Unit, Public Health Wales NHS Trust, Cardiff, United Kingdom, <sup>2</sup> WHO Collaborating Centre for Healthy Urban Environments, University of West of England, Bristol, United Kingdom

**Cost of Health Inequality to the NHS in Wales**

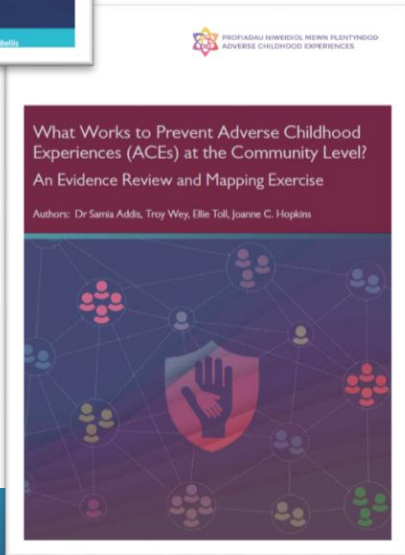
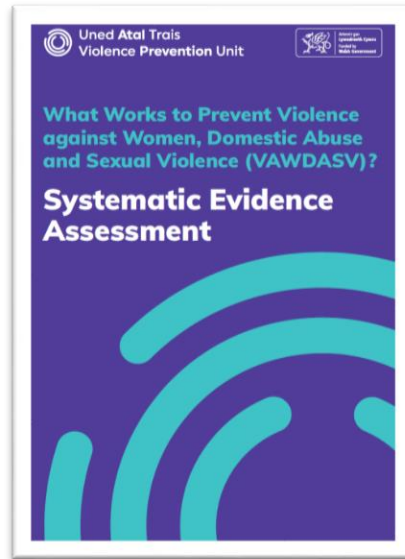
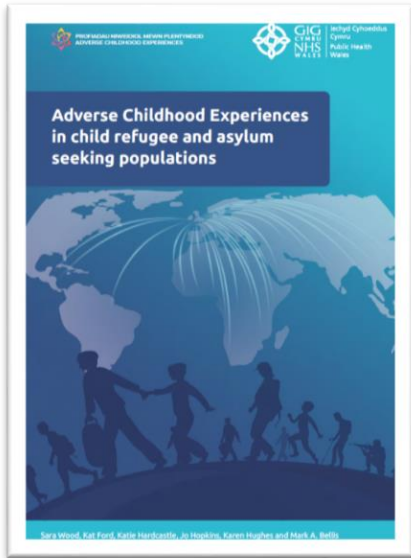
**Report 1 Cost Associated with Inequality in Hospital Service Utilisation to the NHS in Wales**

December 2021

WHO Collaborating Centre on Investment for Health and Well-being  
Public Health Wales

Logos for GIG CYMRU NHS WALES, Iechyd Cyhoeddus Cymru Public Health Wales, Canolfan Gydweithredol Sefydliad Iechyd y Byd ar Fuddsoddi ar gyfer Iechyd a Llesiant, and WHO Collaborating Centre on Investment for Health and Well-being.

# Addressing adversity and trauma across the life course with a focus on ACEs, violence prevention and building resilience



Articles

---

Life course health consequences and associated annual costs of adverse childhood experiences across Europe and North America: a systematic review and meta-analysis

Mark A Bellis, Karen Hughes, Kat Ford, Gabriela Ramos Rodriguez, Dinesh Sethi, Jonathon Passmore

Open Access icons: CrossMark, OA

Articles

---

Health and financial costs of adverse childhood experiences in 28 European countries: a systematic review and meta-analysis

Karen Hughes, Kat Ford, Mark A Bellis, Freya Glendinning, Emma Harrison, Jonathon Passmore

Open Access icons: CrossMark, OA

SOCIAL INNOVATION NARRATIVES

Journal of COMMUNITY SAFETY & WELL-BEING

Addressing the “shadow pandemic” through a public health approach to violence prevention

Lara C. Snowdon,\* Emma R. Barton,\* Annemarie Newbury,\* Bryony Parry,\* Mark A. Bellis,\* and Joanne C. Hopkins\*



# Promoting and supporting Sustainable Development and Health in All Policies, informing policy and practice in Wales and internationally

World Health Organization Collaborating Centre on Investment for Health and Well-being | GIG CYMRU NHS WALES | Iechyd Cyhoeddus Cymru Public Health Wales | WHIASU Wales Health Impact Assessment Support Unit United Kingdom Wales Cymru a Iechyd Cymru

## Health Impact Assessment (HIA) and Local Development Plans (LDPs): A Toolkit for Practice

Liz Green, Lee Parry-Williams, Ed Huckle  
August 2021

Start

Government of Wales | JAHEE | SUSTAINABLE DEVELOPMENT GOALS | World Health Organization Collaborating Centre on Investment for Health and Well-being | GIG CYMRU NHS WALES | Iechyd Cyhoeddus Cymru Public Health Wales

## Step Change for a Sustainable Planet: Implementing the United Nations Sustainable Development Goals

A toolkit for global organisations

START HERE ▶

CYNAL | SUSTAIN CYMRU | WALES | GIG CYMRU NHS WALES | Iechyd Cyhoeddus Cymru Public Health Wales | World Health Organization Collaborating Centre on Investment for Health and Well-being

## SIFT – Sustainability Improvements for Teams

### Healthy Environment Workshop

Start ▶

WHIASU | World Health Organization Collaborating Centre on Investment for Health and Well-being | GIG CYMRU NHS WALES | Iechyd Cyhoeddus Cymru Public Health Wales

## Maximising health and well-being opportunities for spatial planning in the COVID-19 pandemic recovery

Liz Green, Sue Toner, Laura Evans, Lee Parry-Williams, Tom Johnson, Gemma Christian, Cheryl Williams, Summa Azam and Mark A. Bellis

January 2022

Chartered Institute of Housing | World Health Organization Collaborating Centre on Investment for Health and Well-being | GIG CYMRU NHS WALES | Iechyd Cyhoeddus Cymru Public Health Wales

## No place like home?

Exploring the health and well-being impact of COVID-19 on housing and housing insecurity

Summary Report

Public Health Wales: Louise Woodford, Liz Green, Laura Evans, Lee Parry-Williams, Gemma Christian, Cheryl Williams, Charlotte Gray, Summa Azam, Mark A. Bellis, Chartered Institute of Housing: Tom Toner, Charles, Matthew Rowland, Catherine May

November 2021

A toolkit for public bodies  
*'Leading the Way' for a Sustainable Wales*

Byddwch y Newid

Be the Change

SIFT

Chartered Institute of Housing | GIG CYMRU NHS WALES | Iechyd Cyhoeddus Cymru Public Health Wales

## GREEN OPPORTUNITIES

Supporting Wales' COVID-19 Green Recovery by identifying opportunities to support population health through sustainable means

MDPI

International Journal of Environmental Research and Public Health

Viewpoint

## 'Health in All Policies'—A Key Driver for Health and Well-Being in a Post-COVID-19 Pandemic World

Liz Green <sup>1,2,\*</sup>, Kathryn Ashton <sup>1,2</sup>, Mark A. Bellis <sup>1,3</sup>, Timo Clemens <sup>2,4</sup> and Margaret Douglas <sup>4,5</sup>

# Working across borders, sectors, disciplines, networks and partners towards a healthier, more equal, resilient, prosperous and globally responsible Wales

## WHO CC Work Plan 2022 – 2026

### Terms of reference

**TOR 1:** Provide scientific and policy evidence and expertise to WHO supporting direct technical assistance to Member States to build capacity and implement effective inter-sectoral policies addressing the social determinants of health and equity across the life course.

**TOR 2:** Innovate and harness economic methodologies and multi-disciplinary approaches to support WHO to implement the Economy of Wellbeing initiative.

**TOR 3:** Provide evidence and support WHO to convene stakeholders' dialogues and create a common space for exploring and identifying solutions to critical health equity challenges.

### Activities

- 1) Informing and **accelerating action and solutions to place health equity at the heart** of all policies and investments
- 2) Strengthening the case for investment in population wellbeing and health equity towards **building an Economy of Wellbeing**
- 3) Strengthen **Health and Equity in All Policies towards achieving sustainable development**, leaving no one behind
- 4) Enhancing understanding and awareness, and driving investment for building capacity and resilience to **prevent adversity, trauma and injuries across the life course**

## Developing a Welsh Health Equity Solutions Platform

A **live platform** developed iteratively over time as a gateway to evidence, innovative tools and stakeholder forum to inform and enable sustainable solutions towards closing the health gap

- **Features** including reports, animations, webinars, interactive tools
- **Functionality** including decomposition analysis and automated reports

### 1. Data

Interactive digital dataset and links to key data sources

### 2. Policies

Legislation, strategies, policies, guidance, etc. relevant to health equity and its wider determinants

### 3. Health economics & modelling

Costs, economic consequences, trends, projections, S/ROI related to health equity and wider determinants

### 4. International evidence

International evidence on health equity and promising interventions

### 5. Unmet needs / vulnerability

Evidence and lived experiences related to vulnerable groups, protected characteristics and those at greater risk of poor health

### 6. Sustainable solutions

Exploring & synthesizing evidence and engaging with stakeholders to inform decision-making and investment prioritisation



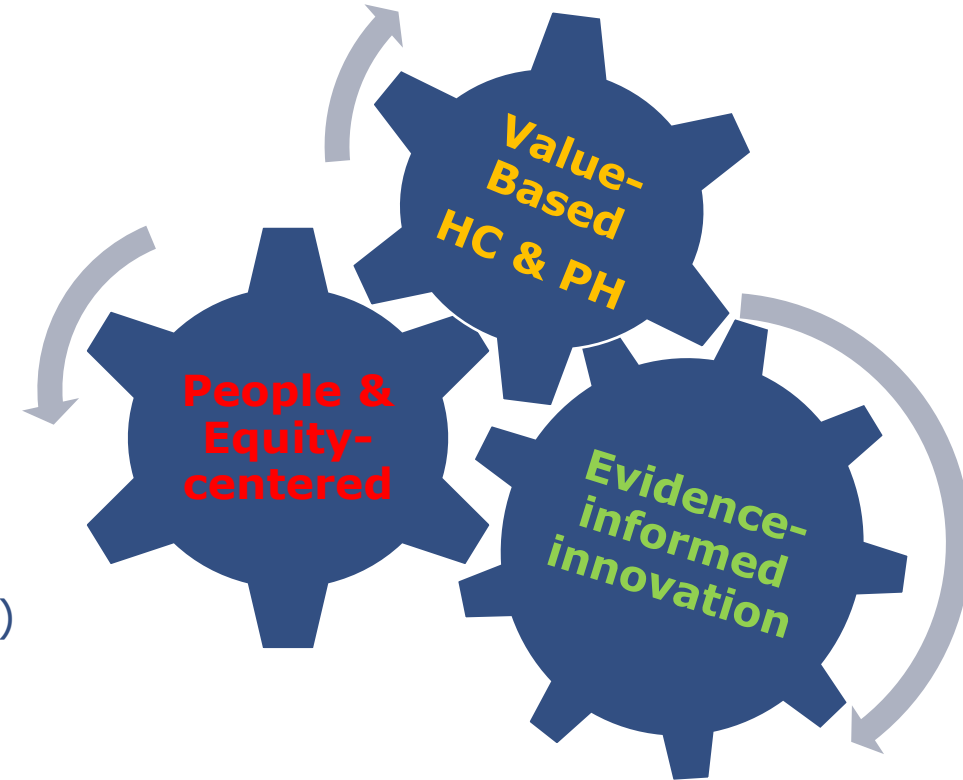
**Digital Health Equity Solutions Platform for Wales**

**WHO Health Equity Dataset and Gateway**

# Forward Look: WHO CC supporting the Foundational Economy in Wales

## Informing and helping to create an Economy of Wellbeing in Wales and beyond

- **People's wellbeing at the centre** of decision-making and investment, enabling all to reach their full potential
- **Mutually reinforcing nature** of population wellbeing, health equity, social capital, economic growth and environmental sustainability
- Informing and enabling **sustainable, efficient and equitable policies and systems across sectors** that secure universal access to public goods, services and opportunities
- Using **Social Value** (social and economic return on investment) in the design and implementation of (public) health and social services, including COVID-19 recovery packages
- Informing and strengthening **Wales' Foundational Economy and NHS investment in population health**, utilising international expertise and piloting innovative tools & approaches



# Resources

[Home - World Health Organization Collaborating Centre On Investment for Health and Well-being \(phwwhocc.co.uk\)](https://phwwhocc.co.uk)

New agreement between WHO/Europe and Welsh Government launched to accelerate action on health equity. <https://www.euro.who.int/en/about-us/partners/news/news/2020/11/new-agreement-between-who-europe-and-welsh-government-launched-to-accelerate-action-on-health-equity>

[Welsh Health Equity Status Report initiative \(WHESRI\) and WHESRI animations](#)

Placing health equity at the heart of the COVID-19 sustainable response and recovery: Building prosperous lives for all in Wales report, 2021. <https://phwwhocc.co.uk/resources/welsh-health-equity-status-report-whesri/>

[Sustainable Investment for Health & Well-being](#)

[How to Make the Case for Sustainable Investment in Well-being and Health Equity: A Practical Guide](#)

[Cost of Health Inequality to the NHS in Wales. Report 1: Cost Associated with Inequality in Hospital Service Utilisation](#)

[International Horizon Scanning](#)

[Wales Health Impact Assessment Support Unit](#)

[Health and Sustainability Hub](#)

[Violence Prevention Unit](#)

[ACE Support Hub and ACEs Resources](#)

[Public Engagement Survey](#)

[COVID 19 Resources](#)

[Summary Report The Impact of COVID-19 on Mental Health and Increasing Vulnerability](#)

[Summary Report On the impact of COVID-19 on increasing the Health Gap and Vulnerability](#)

[Economic Consequences of COVID-19 Pandemic Outbreak on Health Indicators and Health Service Use in Wales](#)

[World Health Organization Collaborating Centre On Investment for Health and Well-being Work Plan](#)

[WHO Collaborating Centre on Investment for Health and Well-being launched](#)

Canolfan Gydweithredol Sefydliad  
Iechyd y Byd ar Fuddsoddi  
ar gyfer Iechyd a Llesiant



World Health Organization  
Collaborating Centre on Investment  
for Health and Well-being

[phwwhocc.co.uk](http://phwwhocc.co.uk)



@phwwhocc



Phwwhocc

# Thank you!

[World Health Organization Collaborating Centre On Investment for Health and Well-being \(phwwhocc.co.uk\)](http://phwwhocc.co.uk)

Public Health Wales, 2 Capital Quarter, Tyndall Street

Cardiff, CF10 4BZ

[www.publichealthwales.org](http://www.publichealthwales.org)



GIG  
CYMRU  
NHS  
WALES

Iechyd Cyhoeddus  
Cymru  
Public Health  
Wales