


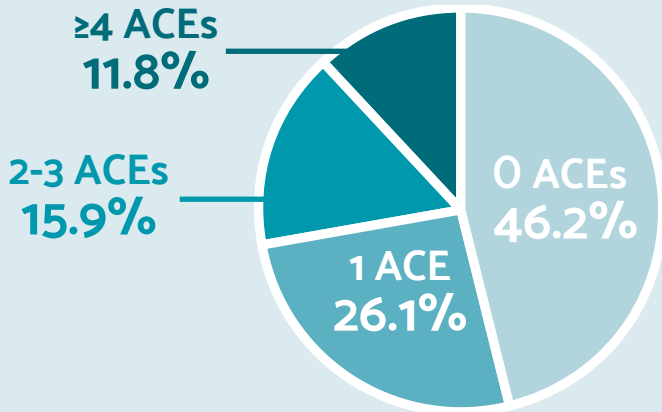
Health visitor enquiry about caregivers' adverse childhood experiences (ACEs): Summarising key learning from a pilot evaluation

ACE enquiry delivered by health visitors (HV) during routine **6-week** contacts with families. Caregivers completed a **written ACE questionnaire** and had the opportunity to **discuss their experiences with the HV**, irrespective of number of ACEs.

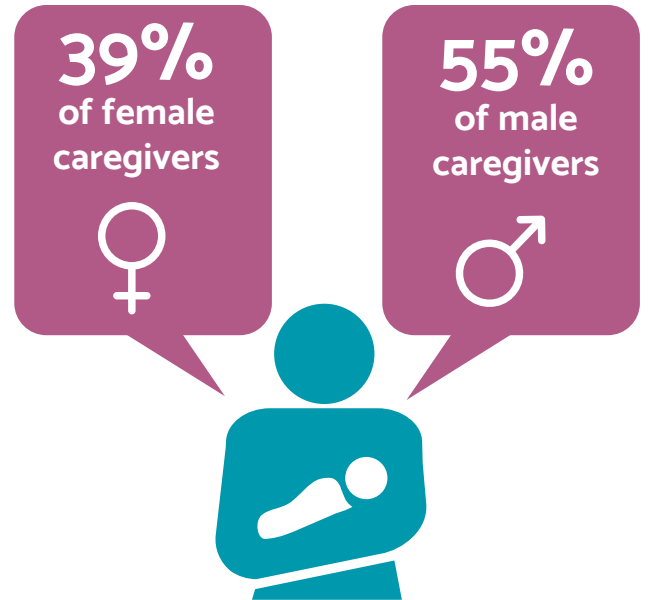
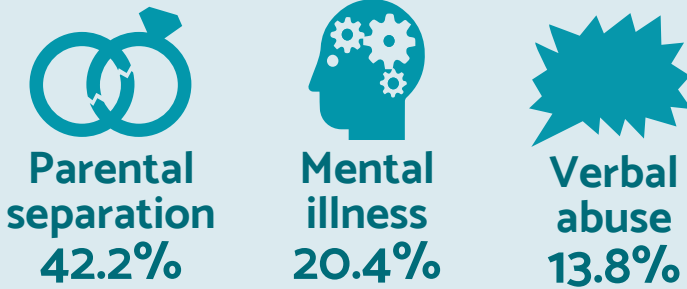
9 out of **10** caregivers agreed to participate



910 **243** **5^a**

Most prevalent ACEs:



...said this was the **first time** they had told a professional or service about their ACEs^b

History of ACEs was significantly associated with:

- Requiring more intensive HV support
- Lower family resilience
- Poorer health (self-rated)
- Less local community involvement

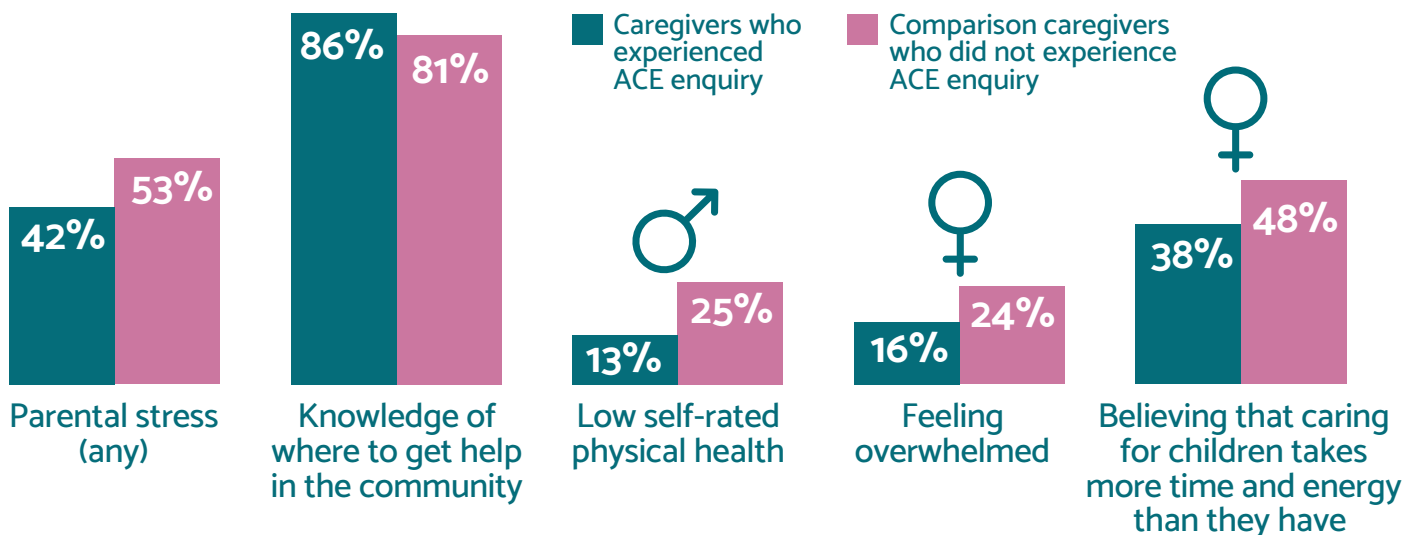
Caregivers with ≥4 ACEs were



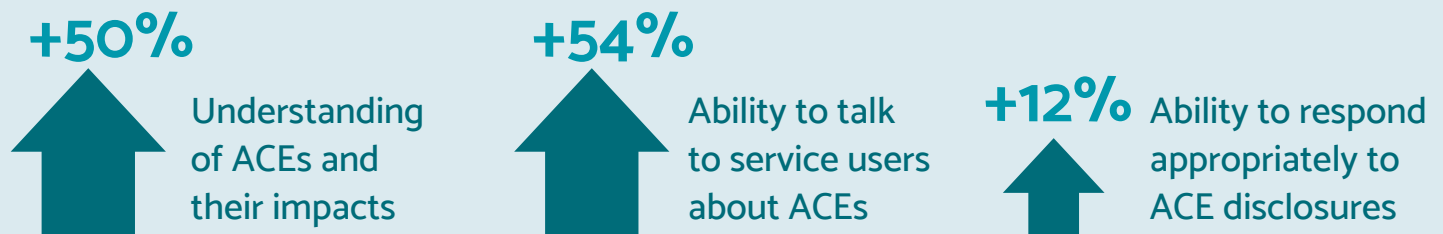
^aTransgender caregivers removed from subsequent analyses due to identifiability; ^bOf those with any ACEs (n=517); ^cCompared with those with 0 ACEs in logistic regression.

Impacts of ACE enquiry^d

Differences in caregiver health and wellbeing 6 months after birth:



Post training and enquiry, HVs^e were increasingly confident in their:



Caregiver **C** & HV **H** feedback

% agree/strongly agree ☹️ 0% ☺️ 100% 😊

ACE enquiry is acceptable^f ☹️ ————— ● ————— 😊

Important for a HV to understand what happened in childhood ☹️ ————— ● ————— 😊

Sufficient time to talk about ACEs ☹️ ————— ● ————— 😊

HV got to know caregiver better as a result of ACE enquiry ☹️ ————— ● ————— 😊

Help and support improved because HV understood childhood better ☹️ ————— ● ————— 😊

Improvements suggested by HVs to support enquiry^g:

- More **specific training** on how to ask about ACEs and respond to disclosures;
- Information on conducting enquiry with families from different **cultures** / with **multiple or other needs**

- ACE enquiry positively received by caregivers
- May be a means to support the caregiver-HV relationship and provide unique opportunities to disclose
- Support is provided for high quality training in ACE awareness
- Further work should look to understand the caregiver experience in more detail.

^dData were also collected from a comparison cohort who had not received ACE enquiry (n=676); ^eSurvey responses compared pre-training to post-implementation for n=58 HVs; ^fCaregivers only; ^gFocus groups conducted with n=74 HVs and team leaders.