

# Spatial Planning and Health in Wales:

## Organisational Structures



**GIG  
CYMRU  
NHS  
WALES**

Iechyd Cyhoeddus  
Cymru  
Public Health  
Wales

### National

**Welsh Government**  
*Planning and health policies, strategies and legislation*  
*Planning and Environment Decisions Wales (PEDW) manages casework relating to the development and use of land in the public interest*

**NHS Wales**  
 7 local health boards and 3 NHS Trusts (Public Health Wales, Welsh Ambulances Services NHS Trust, Velindre NHS Trust)

**Public Health Wales**  
*Protecting and improving health and well-being, and reducing health inequalities for the people of Wales. Incorporating:*  
**Environmental Public Health Service Wales**      **Wales Health Impact Assessment Support Unit (WHIASU)**

### Regional

**Corporate Joint Committees**  
 x4 (North, Mid, South West, South East Wales)  
*Regional collaboration including strategic planning*

**Regional Partnership Boards**  
 x7, (health boards, local authorities, third sector)  
*Improving well-being of the population.  
 Improving how health and care services are delivered*

### Local

**Local Planning Authorities**  
 (x22, and 3 National Park Authorities)  
*Policy planning (Local Development Plans, Supplementary Planning Guidance, Development Management) (planning applications)*

**Town or Community Councils**  
*Engagement with local community, representation of local interests*

**Public Service Boards**  
 Local authorities, health boards, Natural Resources Wales, Fire & Rescue, Police  
*Improving joint working across all public services in local authority areas*

**Local Health Boards**  
 x7, *Plan, secure and deliver local NHS Healthcare Services: Hospital services, primary care, estates, facilities, community, mental health services*

**Local Public Health Teams**  
 x7, *Local public health knowledge, population demographics and surveillance. Evidence based working*

## Spatial Planning and Health in Wales: Policy, strategy and key functions for planning and health

	Spatial Planning	Planning and health joint working	Public health and healthcare services
<b>Welsh Government</b>	<b>Planning Policy</b> Planning Policy Wales (PPW) Future Wales: the national plan 2040	<u>Well-being of Future Generations Act 2015</u> <u>Environment (Wales) Act 2016</u>	<b>Health Policies and Strategies</b> A healthier Wales: long term plan for health and social care 2021 Healthy Weight, Healthy Wales   Health and health services data (StatsWales)
<b>Public Health Wales</b> Wales Health Impact Assessment Support Unit Environmental Public Health Service Wales		Health Impact Assessments Planning and health expertise Environmental Public Health Risk Assessments	Public health Wales long-term strategy: 2018-2030 <u>Public health environmental data</u>
<b>Corporate Joint Committees</b>	Strategic Development Plans		
<b>Regional Partnership Boards</b>		Regional Population Needs Assessments Regional Area Plans	
<b>Public Service Boards</b>		Well-being Assessments for local authority areas Annual Well-being plans	
<b>Local Health Boards</b> Local Public Health Teams Primary care clusters and private healthcare provision		Non-statutory consultee for planning Key stakeholder for Local Development Plans and planning policy, through provision of public health expertise, a focus on wider determinants, local healthcare strategic planning and candidate sites	Strategic plans for healthcare services and population health and well-being (in accordance with NHS planning framework) Local population health needs assessments
<b>Local Planning Authorities</b>	Local Development Plans Supplementary Planning Guidance Planning applications (Development Management)	Consult and liaise with Health Boards and Public Health Wales on planning policy development and planning applications Provide pre-application advice	
<b>Town and Community Councils or Local Planning Authorities</b>	<u>Place Plans</u> – in conjunction with local communities		

## Toolkits

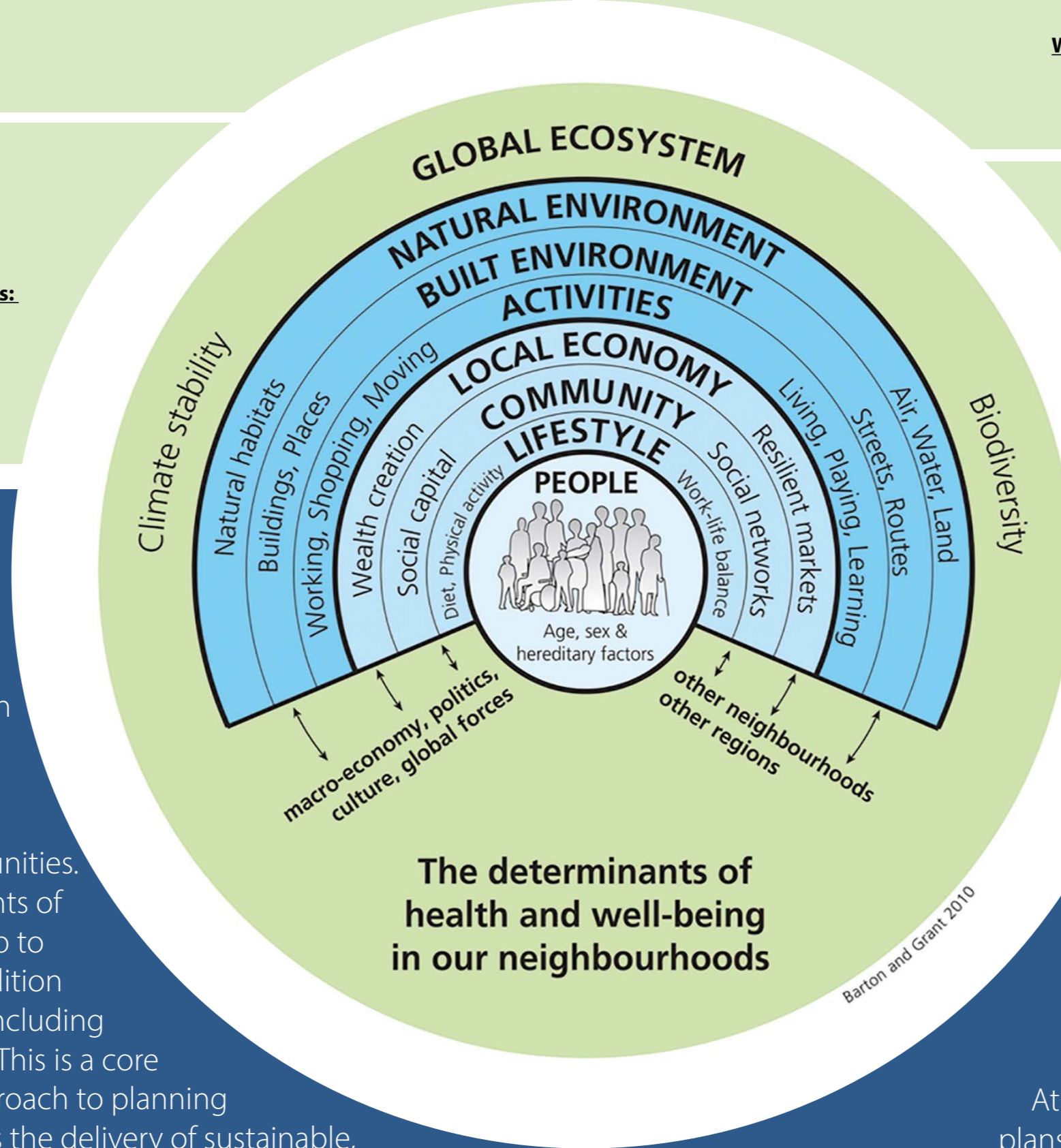
[Health Impact Assessment \(HIA\) and Local Development Plans \(LDPs\): A Toolkit for Practice](#)  
[Planning Application Template](#)  
[Development Plan Tracker](#)  
[Involvement in Local Development Plans](#)

## Guidance

[Development Plans Manual](#)  
[Development Management Manual](#)  
[Technical advice notes](#)  
[Placemaking Charter](#)  
[Planning and Enabling Healthy Environments: incorporating a template for planning policy](#)  
[Health Impact Assessment guidance, support and training.](#)  
[Principles of Community Engagement](#)

## Placemaking & Health

Strengthening the relationship between planning and health can bring a range of benefits to the health and well-being of communities across Wales from both direct and in-direct opportunities. Addressing the wider determinants of health through planning can help to address health inequalities in addition to improving health outcomes including physical and mental well-being. This is a core element of the placemaking approach to planning in Wales – Placemaking supports the delivery of sustainable, healthy and vibrant communities. The [Placemaking Charter](#) looks to promote placemaking through individuals and organisations promoting placemaking through their work, including the six placemaking principles.



**The determinants of health and well-being in our neighbourhoods**

Barton and Grant 2010

## Data & Evidence

[Population Health data \(PHW Observatory\)](#)  
[DataMapWales](#)  
[Stats Wales & ONS](#)  
[Wellbeing of Future Generations Act - Future Trends Data](#)  
[Natural Resources Wales evidence & data](#)  
[Area Statements](#)  
[State of Natural Resources Report \(SoNaRR\)](#)

## Resources & Support

[Planning and health resources and publications](#)

National planning policy provides a framework to deliver sustainable healthy places through policies such as:

- Sustainable transport hierarchy
- Strategic placemaking principles
- Town centre first approach
- Leadership by the public sector
- Nature based solutions and green infrastructure

Health policies and strategies at a national level set out the approach to improving health and well-being for the population of Wales.

At a local level, local health boards' strategic plans provide their vision and model for planning and delivering healthcare services and how they will improve the health of their local populations.