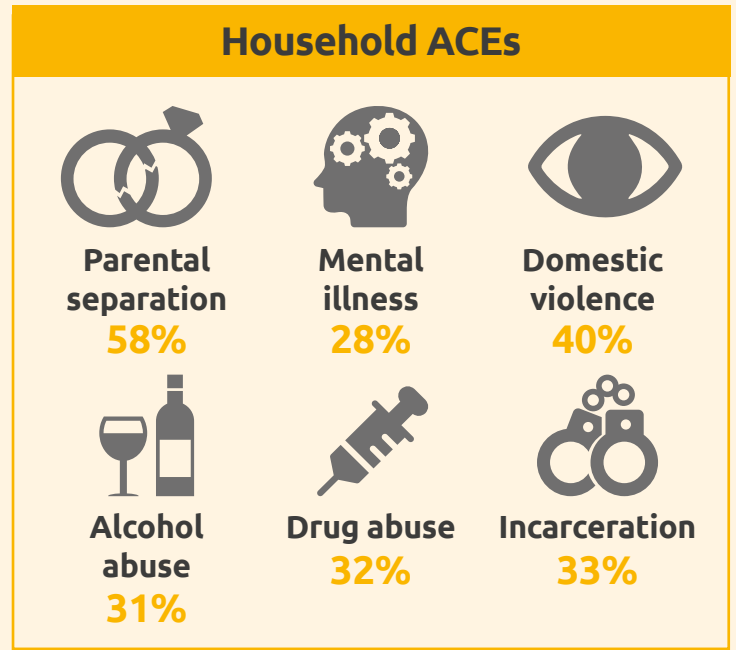
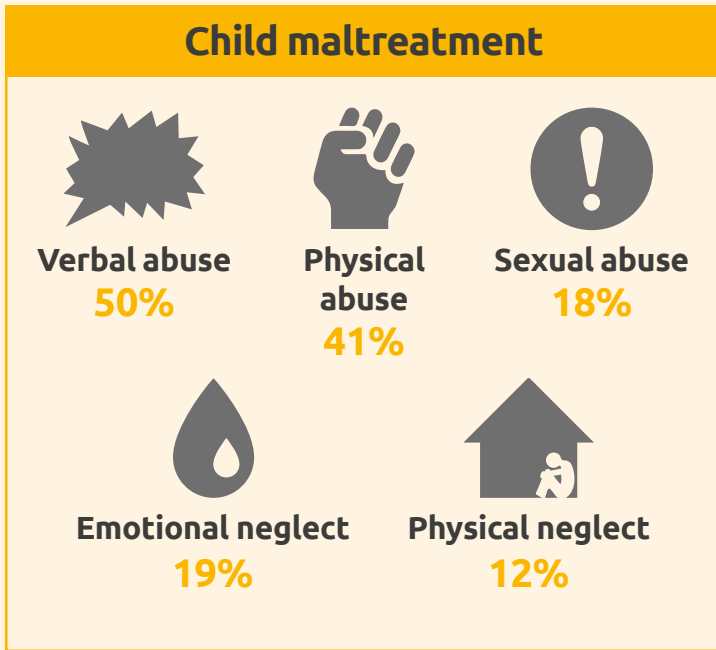


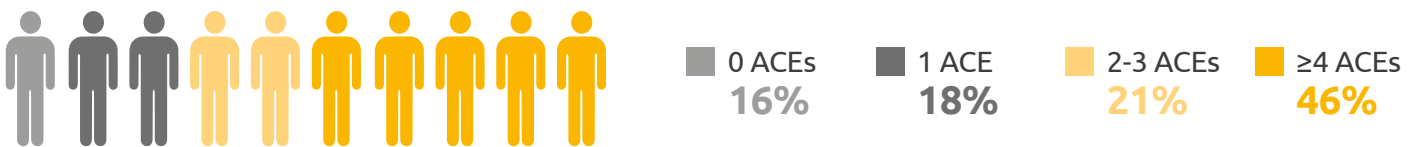
Adverse childhood experiences (ACEs) in an offender population in Wales

The Prisoner ACE Survey interviewed 468 adults (aged 18-69)^a in a Welsh prison between February and June 2018. Participants were asked about their exposure to 11 ACEs in childhood, their offending history and recent involvement in violence.

How many prisoners reported each ACE?



Over 8 in 10 prisoners reported at least 1 ACE, and nearly half had 4 or more ACEs^b



Prisoners with 4 or more ACEs were 4 times more likely to have ever served a sentence in a young offender institution (YOI) than those with no ACEs

Of the 46% of prisoners who had ever served a sentence in a YOI:



9 in 10

had **at least 1 ACE** compared to **8 in 10** of those who did not spend time in a YOI



6 in 10

had **4 or more ACEs** compared to **3 in 10** of those who did not spend time in a YOI

^aSeven in 10 participants were Welsh, 25% were aged 18-24, 84% were white and almost a third reported that they had no educational qualifications, see main report; ^bACE counts do not add up to 100% due to rounding. In comparison, ACE prevalence figures for males in the general population were 54% 0 ACEs, 19% 1 ACE, 16% 2-3 ACEs, 12% ≥4 ACEs, see main report.

Compared with prisoners with no ACEs, those with 4 or more ACEs were:

- 3x more likely** to have ever been convicted of **criminal damage**
- 3x more likely** to have ever been convicted of **violence against the person**
- 3x more likely** to have ever been convicted of **theft**
- 2x more likely** to have ever been convicted of **drugs offences**

Those with 4 or more ACEs were also 3.5 times more likely to be prolific offenders^c

Of the 39% of prisoners categorised as prolific offenders:



9 in 10

had **at least 1 ACE** compared to **8 in 10** of those not categorised as prolific offenders

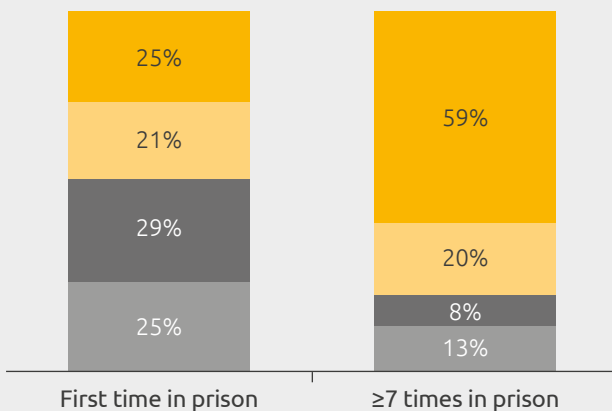


6 in 10

had **4 or more ACEs** compared to **4 in 10** of those not categorised as prolific offenders

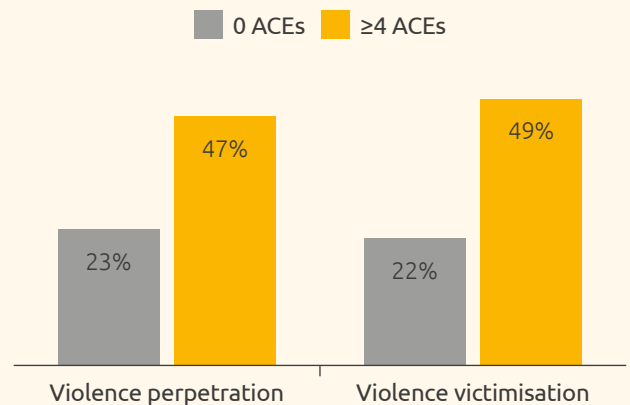
The proportion of individuals reporting 4 or more ACEs increased with number of times in prison

■ 0 ACEs ■ 1 ACE ■ 2-3 ACEs ■ ≥4 ACEs



ACEs substantially increased the risks of recent^d violence involvement

% reporting recent violence involvement



^cBased on how many convictions they reported, classified using the Ministry of Justice prolific offending definition, see main report; ^dIn the past 12 months.

We are grateful to all those who voluntarily gave their time to participate. We would like to thank HMP Parc Prison and all their staff for their help with facilitating this research. The information in this infographic is taken from Ford et al. (2019). Understanding the prevalence of adverse childhood experiences (ACEs) in a male offender population in Wales: The Prisoner ACE Survey. Wrexham: Public Health Wales NHS Trust, Bangor University.



GIG CYMRU
NHS
WALES | Iechyd Cyhoeddus
Cymru
Public Health
Wales

